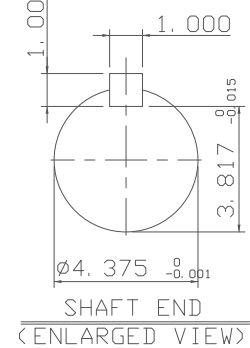
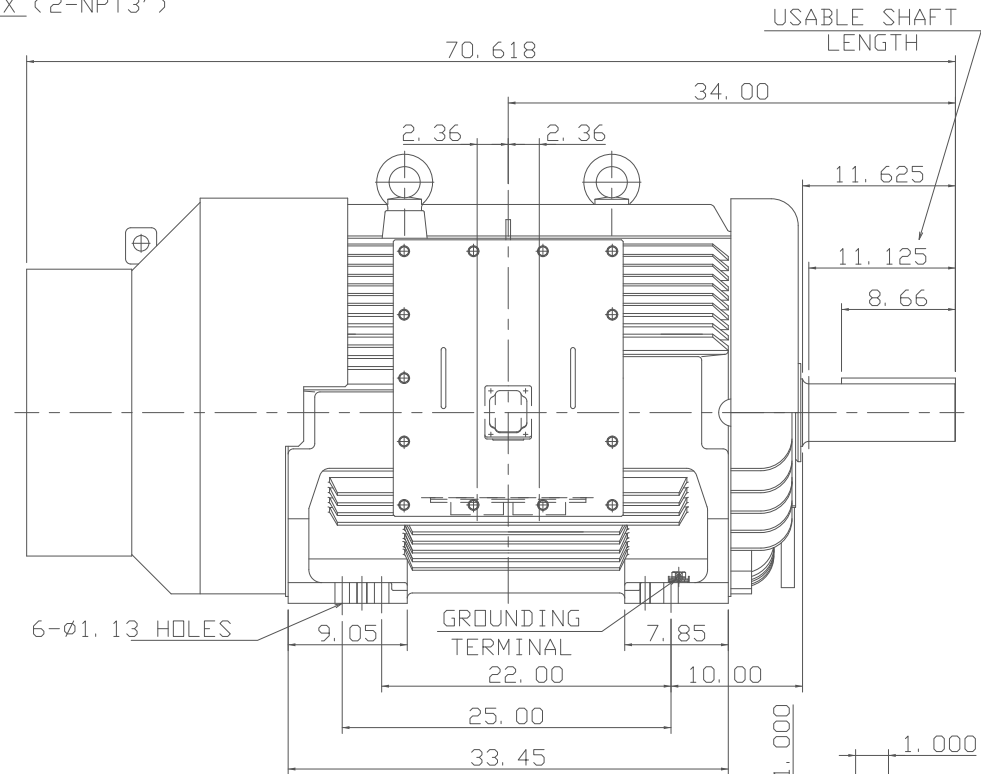
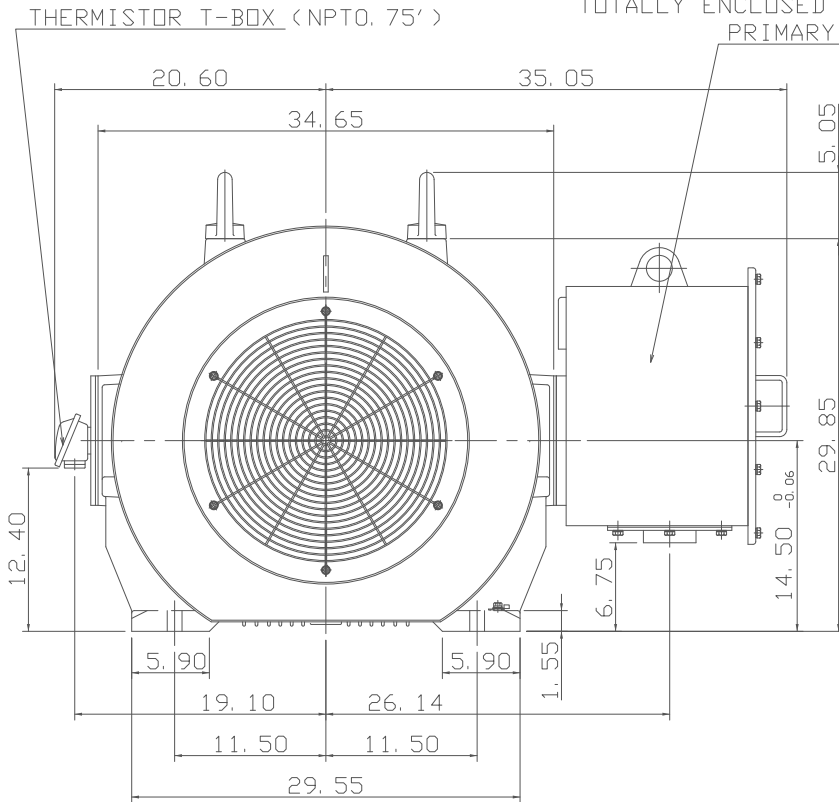


TYPE	OUTPUT		POLE	TIME RATING	VOLTAGE V	Hz	SYN. SPEED R. P. M
	HP.	kW.					
AEHH-GD	500	373	4	CONT.	460	60	1800

TOTALLY ENCLOSED FAN-COOLED TYPE, SQUIRREL-CAGE ROTOR
 PRIMARY T-BOX (2-NPT3')



- NOTE:
1. DIMENSIONS IN inch
 2. FRAME NO.586/7UZ
 3. F CLASS INSULATION, S. F. 1. 15
 4. FOR BELT DRIVE
 5. ENCLOSURE: IP55
 6. BEARING SIZE: DRIVE-END NU326C3
OPP. DRIVE-END 6322
 7. NON-SPARKING FAN
 8. WITH THERMISTOR: PTC 140°C 3PCS
 9. MOTOR APPROX. WEIGHT: 5385lb

DATE			FEB. 01, 2018		OUTLINE DIMENSIONS	
CATALOG NO.:			CDP5004RZ		3-PHASE INDUCTION MOTOR	
DWN.	J. WANG	MAR. 10. 2017	TEC Westinghouse		DWG NO.	REV: 02
CHKD.	H. HUANG	MAR. 10. 2017			4B040T884	
APPD.	C. LIU	MAR. 10. 2017				